

MATCH LINE - SEE DRAWING 00-L-102

MATCH LINE - SEE ENLARGEMENT 2 ON 00-L-103

**1 EASTERN SITE ENLARGEMENT**

SCALE 1:250

**LEGEND**

	PROPERTY LINE		CATCH BASIN - NOT TO SCALE (REFER TO CIVIL)
	DECIDUOUS TREE		PEDESTRIAN CONCRETE (REFER TO CIVIL)
	CONIFEROUS TREE		ASPHALT PATH (REFER TO CIVIL)
	FLOWERING TREE		CONCRETE ROAD PAVING (REFER TO CIVIL)
	SOD		2.4m HT. ORNAMENTAL SECURITY FENCE
	NATIVE PRAIRIE MEADOW SEED MIXTURE (OSC 8135)		DOUBLE LIGHT POLE, REFER TO ELECTRICAL
	NATIVE SLOPE/HILLSIDE SEED MIX (OSC 8225)		SINGLE LIGHT POLE, REFER TO ELECTRICAL
	SWM POND MIX WET/DRY SEED MIX (OSC 8245)		ELECTRICAL CONDUIT

NOTES:  
1. REFER TO DRAWING 00-L-501 FOR PLANT LIST AND NOTES  
2. REFER TO DRAWING 00-L-104 FOR ENTRANCE ENLARGEMENT  
3. FOR ALL OTHER DESIGN ELEMENTS REFER TO OTHER DISCIPLINES' DRAWINGS

0 5 10 m H=1:250

MATCH LINE - SEE ENLARGEMENT 2 ON 00-L-103

ELECTRICAL CONDUIT, REFER TO ELECTRICAL, TYP.

**2 EAST SITE BOUNDARY ENLARGEMENT**

SCALE 1:250

0 5 10 m H=1:250



MATCH LINE - SEE ENLARGEMENT 1 ON 00-L-103

OAK POINT HIGHWAY

SOD ISLAND

SOD RESTORATION

2.4m HT. ORNAMENTAL SECURITY FENCE, REFER TO DETAIL 7 ON DRAWING 00-L-502

VEHICULAR GATES AND PEDESTALS, REFER TO SECURITY, TYP.

DIESEL TANKS, REFER TO ARCHITECTURE

DIESEL PUMP HOUSE, REFER TO ARCHITECTURE

PROPERTY LINE

SEED RESTORATION WITH NATIVE PRAIRIE MEADOW SEED MIXTURE (OSC 8135)

STORMWATER RETENTION BASIN BOTTOM, SEEDED WITH SWM POND WET/DRY SEED MIX (OSC 8245)

STORMWATER RETENTION BASIN SLOPE, SEEDED WITH NATIVE SLOPE/HILLSIDE SEED MIX (OSC 8225)

GATE AND ELECTRICAL BOX, REFER TO ELECTRICAL

SOD RESTORATION

**ISSUE/REVISION**

NO.	DATE	DESCRIPTION
0	02/16/2025	ISSUED FOR TENDER
C	02/14/2025	ISSUED FOR 90% DESIGN
B	12/06/2024	ISSUED FOR 66% DESIGN RESUBMISSION
A	08/12/2024	ISSUED FOR 66% DESIGN
1/R		

**PROJECT NUMBER**

60721079

**SHEET TITLE**LANDSCAPE PLANTING  
SHEET 2 OF 2**SHEET NUMBER**

00-L-103

## GENERAL NOTES:

1. THESE DRAWINGS SHALL NOT BE USED FOR CONSTRUCTION UNLESS STAMPED AND SIGNED BY THE LANDSCAPE ARCHITECT.
2. ANY AMBIGUITY IN THE DRAWINGS, SPECIFICATIONS OR DETAILS IS TO BE REPORTED TO THE CONTRACT ADMINISTRATOR FOR DIRECTION. DO NOT PROCEED IN UNCERTAINTY.
3. DRAWINGS MAY BE SCALED FOR APPROPRIATE LAYOUT ONLY. ALL MEASUREMENTS IN METRIC. ALL LAYOUT, INCLUDING PLANTING, TO BE STAKED BY THE CONTRACTOR AND APPROVED BY THE CONTRACT ADMINISTRATOR.
4. THE CONTRACTOR IS TO TAKE NECESSARY PRECAUTION TO PROTECT ALL EXISTING SITE FEATURES UNLESS SPECIFIED FOR DEMOLITION. THIS INCLUDES ALL SURVEY BARS, STAKES AND MONUMENTS. MAKE GOOD ANY DAMAGE.
5. UPON COMPLETION OF WORK EACH DAY, REMOVE ALL DEBRIS, GARBAGE AND SURPLUS MATERIALS FROM THE SITE. KEEP THE SITE CLEAN AND USABLE AT ALL TIMES.
6. ALL DECIDUOUS AND CONIFEROUS TREES SHALL HAVE A WARRANTY FOR TWO FULL YEARS FOLLOWING FINAL ACCEPTANCE OF THE PROJECT. ALL WORKMANSHIP TO THE STANDARDS OF MANITOBA NURSERY LANDSCAPE ASSOCIATION (MNL) AND COMPLY WITH ALL APPLICABLE PROVINCIAL AND MUNICIPAL LANDSCAPE CONSTRUCTION REGULATIONS.
7. AT THE TIME OF FINAL INSPECTION, ALL PLANTS SHALL BE IN A HEALTHY, VIGOROUS GROWING CONDITION, PLANTED IN FULL ACCORDANCE WITH DRAWINGS AND CONDITIONS.
8. ANY CHANGES TO THIS ACCEPTED PLAN MUST BE REVIEWED AND APPROVED BY THE CONTRACT ADMINISTRATOR.
9. ALL AREAS DISTURBED DURING REMOVAL OF SEDIMENT AND EROSION CONTROL MEASURES ARE TO BE SODDED OR SEEDED BASED ON LOCATION, SEE LANDSCAPE PLANS.

## PLANTING NOTES

1. PLANT MATERIALS SPECIFIED FOR THIS PROJECT WILL CONFORM TO THE CANADIAN NURSERY LANDSCAPE ASSOCIATION (CNLA) FOR SIZE, VARIETY AND CONDITION AS INDICATED ON THE PLANT LIST SHOWN ON THIS SHEET. ANY PLANT MATERIALS WHICH DO NOT CONFORM WILL BE PROMPTLY REMOVED FROM THE SITE AND REPLACED BY THE CONTRACTOR AT NO ADDITIONAL COST.
2. THE CONTRACT ADMINISTRATOR IS TO BE CONTACTED FOR INSPECTION AND WRITTEN APPROVAL PRIOR TO ANY PLANT MATERIAL INSTALLATION. THE CONTRACT ADMINISTRATOR RESERVES THE RIGHT TO REJECT ANY PLANT MATERIALS THAT HAVE NOT BEEN INSPECTED AND APPROVED.
3. ANY PLANT MATERIAL THAT IS REJECTED BY THE CONTRACT ADMINISTRATOR WILL BE PROMPTLY REMOVED FROM THE SITE AND REPLACED WITH MATERIAL OF ACCEPTABLE QUALITY AT NO ADDITIONAL COST TO THE PROJECT.
4. ONLY REMOVE DEAD OR DAMAGED BRANCHES ON TREES AND SHRUBS. ALL PRUNING SHALL BE PERFORMED IN ACCORDANCE WITH STANDARD HORTICULTURAL PRACTICES AND APPROPRIATE TIMING FOR EACH SPECIES.
5. PLANTING LAYOUT TO BE DETERMINED ON SITE AT DIRECTION OF THE CONTRACT ADMINISTRATOR. FIELD ADJUSTMENTS TO GENERAL PLANT LOCATIONS INDICATED ON THE PLAN MAY BE NECESSARY TO RESPOND TO SITE CONDITIONS.
6. ANY DISCREPANCIES BETWEEN QUANTITIES SHOWN AND THE PLANT LIST SHALL BE REPORTED TO THE CONTRACT ADMINISTRATOR FOR DIRECTION.
7. ANY SUBSTITUTIONS OF PLANT MATERIALS REQUIRE THE PRIOR WRITTEN PERMISSION OF THE CONTRACT ADMINISTRATOR.
8. TREES AND SHRUBS ARE TO BE PLANTED AND STAKED IN ACCORDANCE WITH TYPICAL PLANTING DETAILS. CONTRACTOR TO REMOVE ALL STAKES AND TIES FROM THE SITE AT THE END OF THE FIRST GROWING SEASON.
9. PLANTS ARE NOT TO BE INSTALLED OR TRANSPLANTED DURING EXTREME HEAT, DROUGHT, OR OTHER UNDESIRABLE CONDITIONS. THE CONTRACTOR IS NOT TO PROCEED IN UNCERTAINTY. CONTACT CONTRACT ADMINISTRATOR FOR DIRECTION.
10. DO NOT PLANT IN DRAINAGE SWALES UNLESS DIRECTED, WHERE PROPOSED PLANTING LOCATIONS CONFLICT WITH CONSTRUCTED SWALES, CONTACT CONTRACT ADMINISTRATOR FOR DIRECTION.
11. ALL PLANT MATERIALS WILL BE PLANTED IN SOIL NATIVE TO THE SITE. IF ADDITIONAL TOPSOIL IS NECESSARY FOR COMPLIANCE WITH THESE SPECIFICATIONS, IT MUST BE APPROVED BY THE CONTRACT ADMINISTRATOR PRIOR TO APPLICATION.
12. ALL TOPSOIL IS TO BE STOCKPILED SEPARATELY FROM SUBSOIL DURING THE EXCAVATION PERIOD.
13. ALL SUBSOIL COMPACTED DURING CONSTRUCTION ACTIVITIES IS TO BE SCARIFIED TO THE SATISFACTION OF THE CONTRACT ADMINISTRATOR PRIOR TO PLACEMENT OF TOPSOIL.
14. SHREDDED PINK BARK MULCH SHALL BE SPREAD UNIFORMLY AROUND BASE OF TREES AND SHRUBS TO A DEPTH OF 100mm AND A RADIUS OF 100mm FROM TRUNK(S). DO NOT PLACE MULCH IN DIRECT CONTACT WITH TRUNKS.
15. SHRUBS TO BE PLANTED IN A CONTINUOUS PLANTING BED WITH CONTINUOUS MULCH UNLESS NOTED OTHERWISE.
16. THE CONTRACTOR IS RESPONSIBLE FOR MAKING ARRANGEMENTS FOR PLANT MATERIAL TO BE MAINTAINED IN A HEALTHY STATE FOR THE DURATION OF THE WARRANTY PERIOD AND FOR ALL MAINTENANCE AND REPLACEMENT OF DEAD PLANT MATERIALS DURING THE WARRANTY PERIOD UNTIL ACCEPTABLE BY THE CONTRACT ADMINISTRATOR AND THE CITY OF WINNIPEG.
17. ALL AREAS OF DISTURBED SOIL MUST BE STABILIZED WITH EROSION CONTROL MEASURES AND/OR SEEDED WITH NATIVE GROUND COVER SEED MIX IMMEDIATELY UPON COMPLETION OF WORK UNLESS OTHERWISE NOTED. PLEASE PROVIDE EROSION CONTROL MATTING/BANKETS WITH FULLY BIODEGRADABLE, WOVEN NETTING TO BE USED TO PREVENT WILDLIFE ENTRAPMENT.
18. THE CONTRACTOR IS TO REVIEW WITH CONTRACT ADMINISTRATOR ANY MAINTENANCE REQUIREMENTS NECESSARY FOR WARRANTY PURPOSES.
19. THE CITY OF WINNIPEG RESERVES THE RIGHT TO EXTEND THE CONTRACTOR'S WARRANTY RESPONSIBILITIES FOR AN ADDITIONAL YEAR IF, AT THE END OF THE INITIAL WARRANTY PERIOD LEAF DEVELOPMENT AND GROWTH IS NOT SUFFICIENT TO ENSURE FUTURE SURVIVAL AS DETERMINED BY CONTRACT ADMINISTRATOR.
20. A MINIMUM OF TWO YEARS OF MONITORING FOR TREE ESTABLISHMENT IS REQUESTED. ALL DEAD AND DYING TREES WOULD NEED TO BE REPLACED AT THE END OF THE TWO-YEAR MONITORING PERIOD.
21. LOCATE AND VERIFY THE EXISTENCE OF ALL UTILITIES PRIOR TO STARTING PLANTING OPERATIONS.
22. ALL PLANTS SHALL BE INSTALLED AS PER CONTRACT SPECIFICATIONS AND CITY OF WINNIPEG STANDARD DETAILS.

## SEEDING NOTES

1. THE CONTRACTOR IS TO ENSURE COVERAGE AND SEED MIX GERMINATION.
2. SEED APPLICATION TO BE APPLIED IN A CONSISTENT AND THOROUGH FASHION COVERING ENTIRE SITE.
3. SEED SLOPES OF 3:1 OR GREATER TO BE APPLIED IN COMBINATION WITH FLEXITERRA HIGH PERFORMANCE-FLEXIBLE GROWTH MEDIUM (HP-FGM) OR APPROVED EQUIVALENT.
4. SEED MIX AND RATES AS NOTED ON THIS SHEET. FOLLOW THE MANUFACTURER'S RECOMMENDATIONS AND INSTRUCTIONS FOR SEED METHOD(S).
5. SEEDED AREAS WILL BE ACCEPTED PROVIDED THAT SEED IS PROPERLY ESTABLISHED AT 30, 60, AND 90-DAY PERIODS FOLLOWING SEED AND COVER INSTALLATION. SEED WILL BE INSPECTED BY THE CONTRACT ADMINISTRATOR AND/OR THE LANDSCAPE ARCHITECT USING THE SEEDING AND COVER QUALITY ASSURANCE VISUAL INSPECTION FIELD GUIDE TO ENSURE COMPLIANCE.
6. CONTRACT ADMINISTRATOR TO BE CONTACTED PRIOR TO SEEDING TO COORDINATE OPERATIONS IN ORDER TO ENSURE FINAL ACCEPTANCE.
7. ALL SEEDING OF DISTURBED AREAS MUST OCCUR IMMEDIATELY UPON COMPLETION OF THE GRADING WORK. WEATHER PERMITTING, SEEDING OPERATIONS SHOULD TAKE PLACE BETWEEN APRIL 15 AND JUNE 15 OR BETWEEN AUGUST 15 AND OCTOBER 30 AT THE LATEST, PROVIDING THE GROUND IS IN A FROST-FREE CONDITION. IN THE EVENT THAT IMMEDIATE COMPLETION OF SEEDING IS NOT FEASIBLE OTHER EROSION CONTROL METHODS WILL BE REQUIRED. DISCUSS WITH THE CONTRACT ADMINISTRATOR PRIOR TO PROCEEDING.
8. HYDROSEED AFTER PLANTING IS COMPLETE. DO NOT APPLY HYDROSEED FROM A DISTANCE. BRING HOSE AND NOZZLE TO PLANTING AREA TO APPLY HYDROSEED DIRECTLY TO TOPSOIL AROUND PLANT MATERIAL. DO NOT DAMAGE PLANT MATERIAL WITH HOSE. HYDROSEED ALL EXPOSED TOPSOIL.
9. ALL AREAS ON SLOPE DISTURBED DURING REMOVAL OF SEDIMENT AND EROSION CONTROL MEASURES ARE TO BE SEEDED WITH HYDROSEED APPLICATION OF THE SPECIFIED SEED MIX.
10. ALL TOPSOIL COMPACTED ON SLOPE DURING CONSTRUCTION ACTIVITIES IS TO BE SCARIFIED TO THE SATISFACTION OF THE CONTRACT ADMINISTRATOR PRIOR TO SEED APPLICATION.
- IF DISTURBED AREA ON SLOPE EXTENDS BEYOND CONSTRUCTION LIMIT, APPLY 50mm THICK TOPSOIL AND SEED.

## SODDING NOTES

1. THE CONTRACTOR IS TO ENSURE COVERAGE AND SOD GROWTH.
2. SOD APPLICATION TO BE INSTALLED IN A CONSISTENT AND THOROUGH FASHION COVERING ENTIRE AREA AS SHOWN.
3. SOD ALL DISTURBED AREAS WITHIN THE RIGHT OF WAY.
4. TOPSOIL IN SODDED AREAS TO BE 150mm MINIMUM.
5. SOD WITH TURF GRASS NURSERY SOD TYPES:
  - 5.1. NUMBER ONE KENTUCKY BLUEGRASS SOD AND/OR FESCUE SOD
  - 5.2. NURSERY SOD GROWN SOLELY FROM SEED MIXTURE OF CULTIVARS OF KENTUCKY BLUEGRASS AND/OR CHEWING FESCUE OR CREEPING RED FESCUE, CONTAINING NOT LESS THAN 40% KENTUCKY BLUEGRASS CULTIVARS AND 30% CHEWING FESCUE OR CREEPING RED FESCUE CULTIVARS.
6. CONTRACT ADMINISTRATOR TO BE CONTACTED PRIOR TO SODDING TO COORDINATE OPERATIONS IN ORDER TO ENSURE FINAL ACCEPTANCE.
7. ALL SODDING OF DISTURBED AREAS MUST OCCUR IMMEDIATELY UPON COMPLETION OF THE GRADING WORK. WEATHER PERMITTING, SODDING OPERATIONS SHOULD TAKE PLACE BETWEEN APRIL 15 AND JUNE 15 OR BETWEEN AUGUST 15 AND OCTOBER 30 AT THE LATEST, PROVIDING THE GROUND IS IN A FROST-FREE CONDITION. IN THE EVENT THAT IMMEDIATE COMPLETION OF THE SODDING IS NOT FEASIBLE OTHER EROSION CONTROL METHODS WILL BE REQUIRED. DISCUSS WITH CONTRACT ADMINISTRATOR PRIOR TO PROCEEDING.
8. ALL TOPSOIL COMPACTED DURING CONSTRUCTION ACTIVITIES IS TO BE SCARIFIED TO THE SATISFACTION OF THE CONTRACT ADMINISTRATOR PRIOR TO SOD APPLICATION.
9. IS DISTURBED AREA IN THE RIGHT OF WAY EXTENDS BEYOND CONSTRUCTION LIMIT, APPLY 150mm THICK TOPSOIL AND SOD.

Native Prairie Meadow Seed Mix (OSC #8135)		
LATIN NAME	COMMON NAME	% OF MIX
Rutbeckia hirta	Black Eyed Susan	7
Solidago juncea	Early Goldenrod	1
Poa palustris	Fowl Bluegrass/Fowl Meadowgrass	25
Penstemon digitalis	Foxglove/Beardtongue	2
Sorghastrum nutans	Indiangrass	20
Schizachyrium scoparium	Little Blue Stem	15
Aster novae-angliae	New England Aster	1
Desmodium canadense	Shovick Tick Trefoil	1
Panicum virgatum	Switchgrass	25
Verbena urticifolia	White Vervain	1
Monarda fistulosa	Wild Bergamot	2
Total		100
Application: Hydroseed at a rate of 25kg/ha		
Nurse Crop: Apply Nurse Crop at a rate of 25-30kg/ha.		

Native Slope/ Hillside Seed Mix (OSC #8225)		
LATIN NAME	COMMON NAME	% OF MIX
Agrostis solonifera	Creeeping Bentgrass	20
Rutbeckia hirta	Black Eyed Susan	10
Poa compressa	Canada Bluegrass	30
Aster novae-angliae	New England Aster	3
Avena sativa	Oats	30
Monarda fistulosa	Wild Bergamot	2
Elymus hystrix	Bottle Brush Grass	5
Total		100
Application: Hydroseed at a rate of 25kg/ha		
Nurse Crop: Apply Nurse Crop at a rate of 25-30kg/ha.		

SWM Pond Mix Drainage Channel Seed Mix (OSC #8173)		
LATIN NAME	COMMON NAME	% OF MIX
Rutbeckia hirta	Black Eyed Susan	2
Eupatorium maculatum	Spotted Joe Pye Weed	1
Aster novae-angliae	New England Aster	2
Andropogon gerardi	Big Bluestem	25
Carex vulpinoidea	Fox Sedge	25
Elymus hystrix	Bottle Brush Grass	5
Panicum virgatum	Switchgrass	20
Elymus canadensis	Canada Wild Rye	20
Total		100
Application: Hydroseed at a rate of 25kg/ha		
Nurse Crop: Apply Nurse Crop at a rate of 25-30kg/ha.		

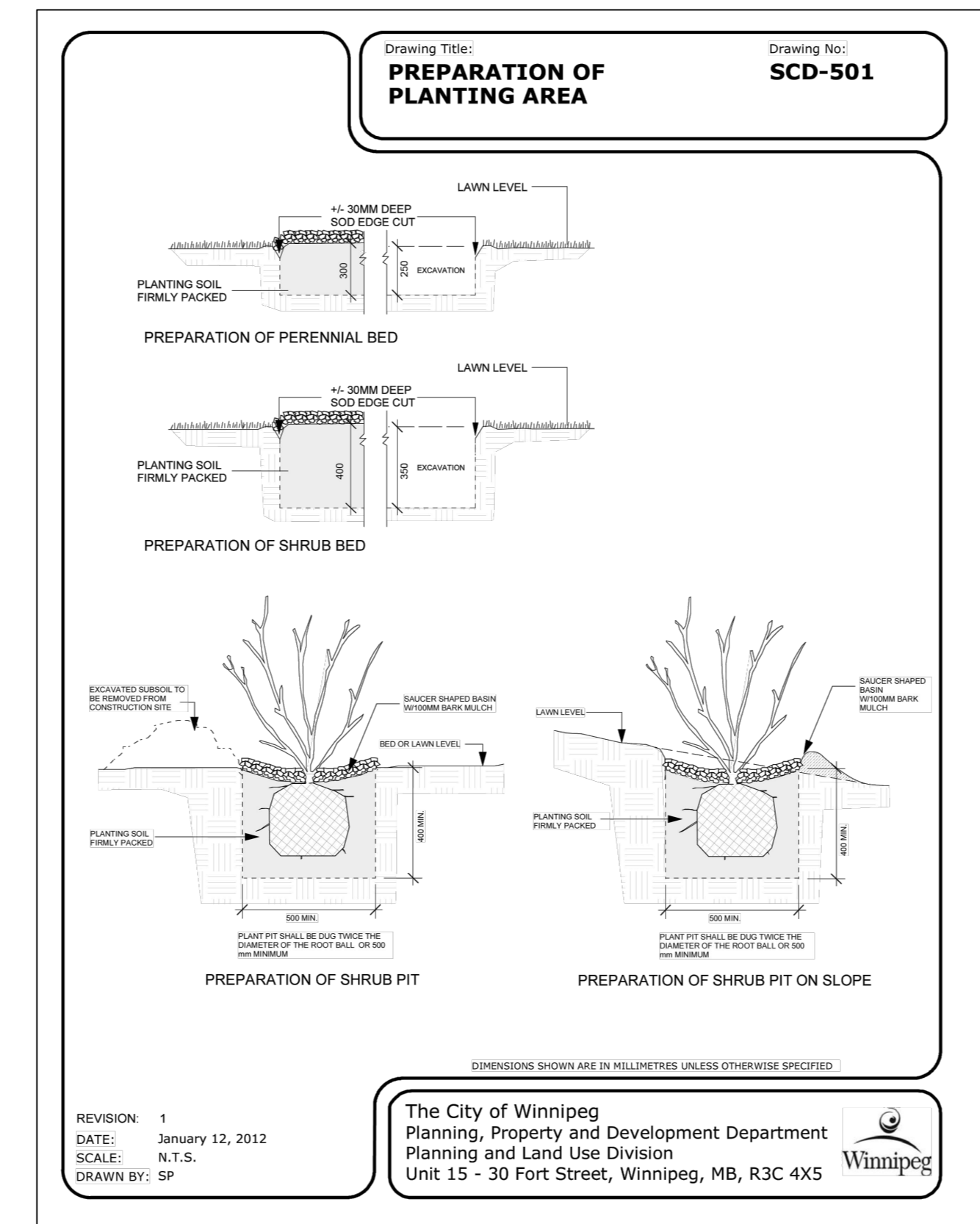
SWM Pond Mix Wet Dry Seed Mix (OSC #8245)		
LATIN NAME	COMMON NAME	% OF MIX
Rutbeckia hirta	Black Eyed Susan	3
Elymus canadensis	Canada Wild Rye	20
Carex vulpinoidea	Fox Sedge	17
Sorghastrum nutans	Indiangrass	15
Aster novae-angliae	New England Aster	3
Eupatorium maculatum	Spotted Joe Pye Weed	1
Panicum virgatum	Switchgrass	20
Elymus virginicus	Virginia Wild Rye	20
Monarda fistulosa	Wild Bergamot	1
Total		100
Application: Hydroseed at a rate of 25kg/ha		
Nurse Crop: Apply Nurse Crop at a rate of 25-30kg/ha.		

NURSE CROP: Annual Oats (Avena sativa) or Canada Wild Rye (Elymus canadensis)

PLANT LIST									
DECIDUOUS TREES									
KEY	00-L-102	00-L-103	TOTAL QTY.	LATIN NAME	COMMON NAME	SIZE	HEIGHT	ROOT	SPACING
Ac	1	3	4	Amelanchier canadensis	Servicberry	50mm cal.	--	W.B.	AS SHOWN
Ar	1	1	2	Acer rubrum	Red Maple	50mm cal.	--	W.B.	AS SHOWN
As	5	1	6	Acer saccharinum	Silver Maple	50mm cal.	--	W.B.	AS SHOWN
Bp	7	--	7	Betula papyrifera	White Birch	50mm cal.	--	W.B.	AS SHOWN
Ms	8	--	8	Malus sargentii 'Rosa'	Pink Sargent Crabapple	45mm cal.	--	W.B.	AS SHOWN
Pb	6	--	6	Populus balsamifera	Balsam Poplar	50mm cal.	--	W.B.	AS SHOWN
Pa	38	10	48	Prunus americana	American Plum	45mm cal.	--	W.B.	AS SHOWN
Qm	6	--	6	Quercus macrocarpa	Burr Oak	50mm cal.	--	W.B.	AS SHOWN
Ta	4	--	4	Tilia americana	Basswood	50mm cal.	--	W.B.	AS SHOWN
Ua	2	3	5	Ulmus americana	White Elm	50mm cal.	--	W.B.	AS SHOWN

CONIFEROUS TREES									
Ab	18	8	26	Abies balsamea	Balsam Fir	--	200cm ht.	W.B.	AS SHOWN
Pg	5	3	8	Picea glauca	White Spruce	--	200cm ht.	W.B.	AS SHOWN
Pba	9	2	11	Pinus banksiana	Jack Pine	--	200cm ht.	W.B.	AS SHOWN
Ps	6	--	6	Pinus strobus	Eastern White Pine	--	200cm ht.	W.B.	AS SHOWN

SHRUBS, PERENNIALS & GRASSES									
epp	496	--	496	Echinacea pallida	Pale Purple Coneflower	1 gal.	--	Potted	0.5m O.C.
ep	308	--	308	Echinacea purpurea	Purple Coneflower	1 gal.	--	Potted	0.6m O.C.
eps	322	--	322	Echinacea purpurea 'Prairie Splendor'	Prairie Splendor Coneflower	1 gal.	--	Potted	0.6m O.C.
gr	123	--	123	Geranium x 'Rozanne'	Rozanne Hardy Geranium	1 gal.	--	Potted	0.5m O.C.
hh	432	--	432	Hemerocallis 'Happy Returns'	Happy Returns Daylily	1 gal.	--	Potted	0.5m O.C.
hr	280	--	280	Hemerocallis 'Ruby Stella'	Ruby Stella Daylily	1 gal.	--	Potted	0.6m O.C.
hpr	90	--	90	Hypericum prolificum	Shrubby St. John's Wort	1 gal.	--	Potted	1.0m O.C.
pa	40	--	40	Perovskia atriplicifolia	Russian Sage	1 gal.	--	Potted	0.8m O.C.
ra	28	--	28	Rhus aromatica 'Gro-Low'	Fragrant Sumac	1 gal.	--	Potted	2.0m O.C.
rf	26	--	26	Rudbeckia fulgida 'American Gold Rush'	American Gold Rush Black Eyed Susan	1 gal.	--	Potted	0.5m O.C.
sa	124	--	124	Sedum x 'Abbeydore'	Autumn Stonecrop	1 gal.	--	Potted	0.5m O.C.



## 1 PLANTING AREA PREPARATION / SHRUB PLANTING

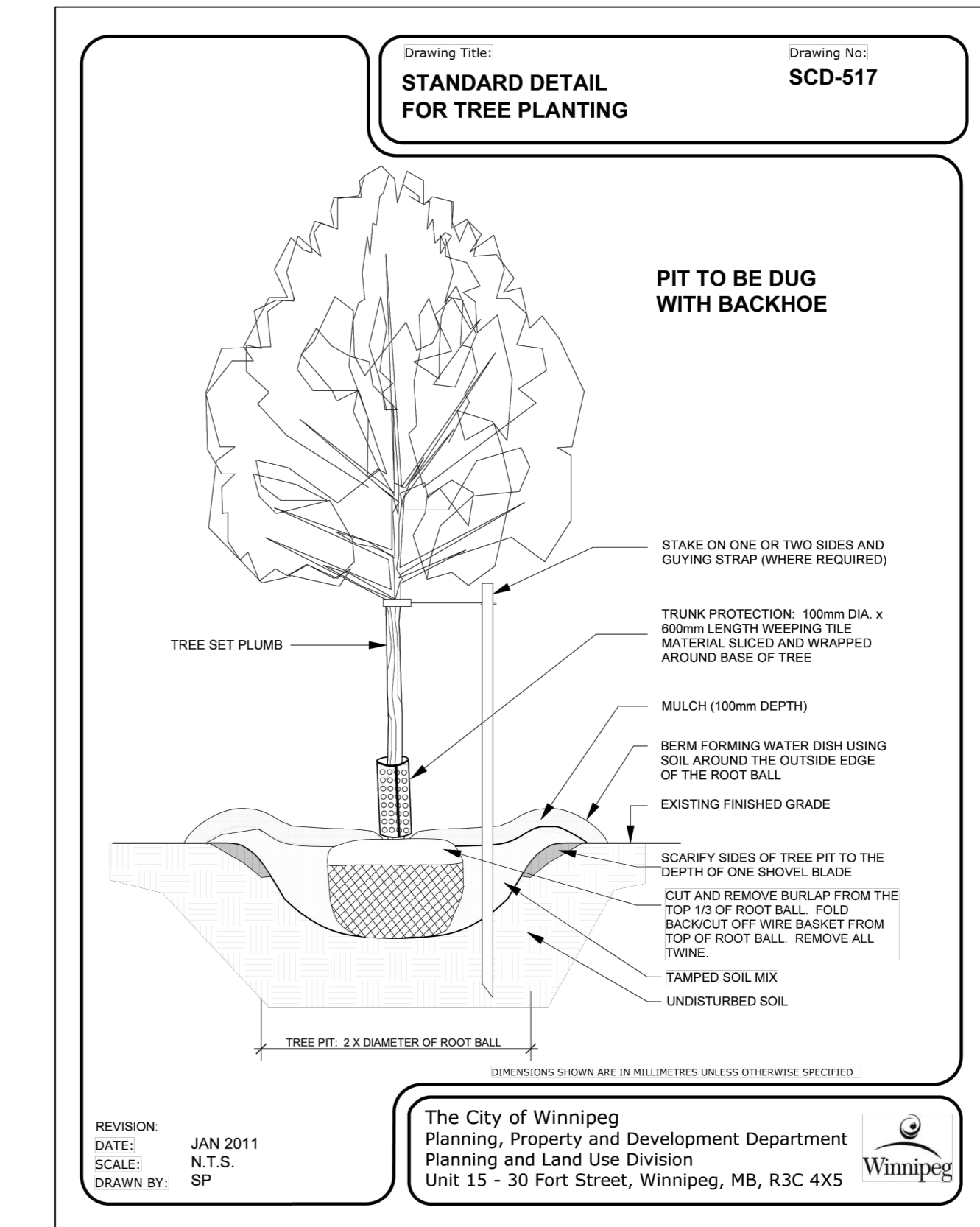
00-L-501

N.T.S.

## 2 CONIFEROUS TREE PLANTING

00-L-501

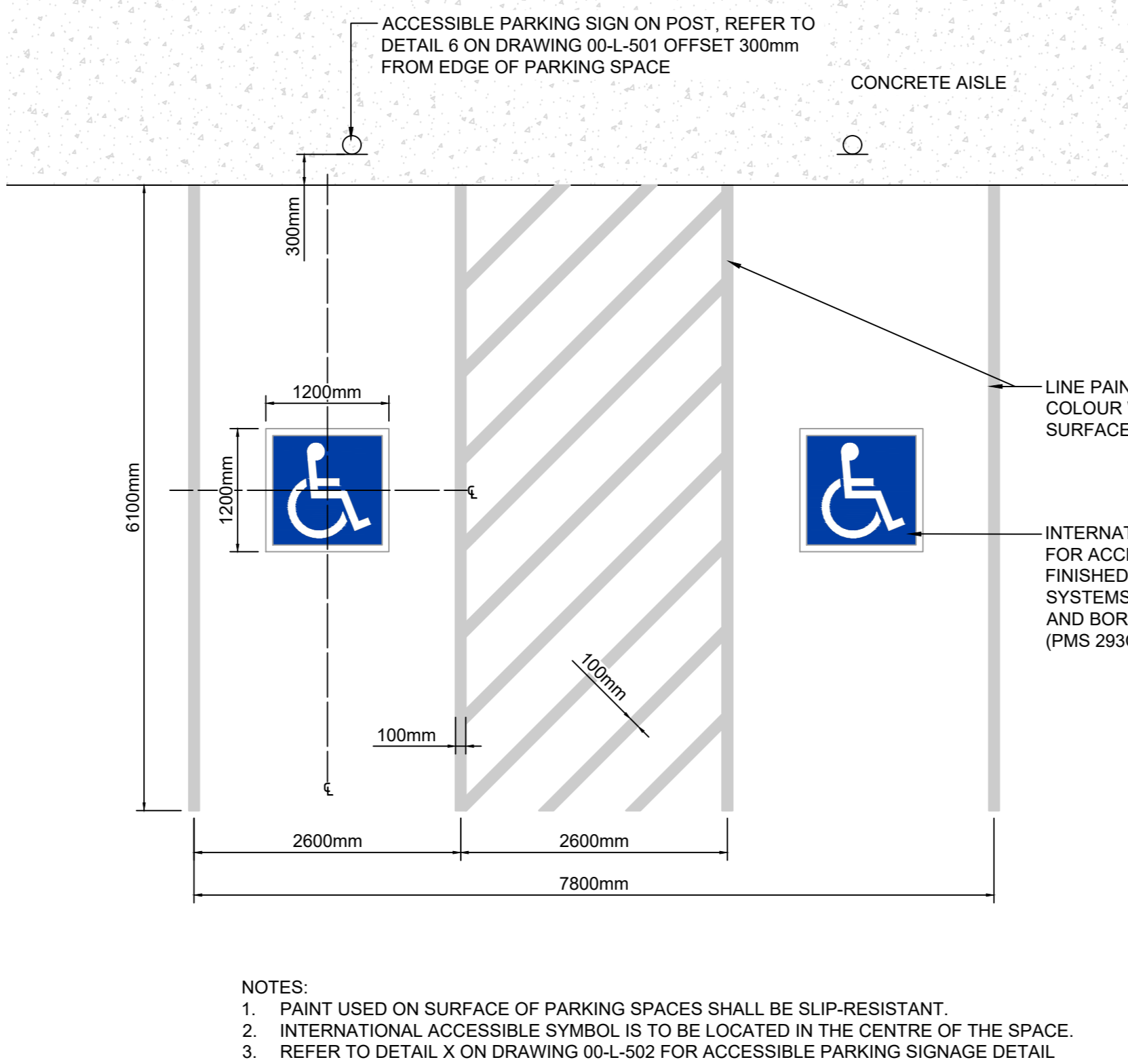
N.T.S.



## 3 DECIDUOUS TREE PLANTING

00-L-501

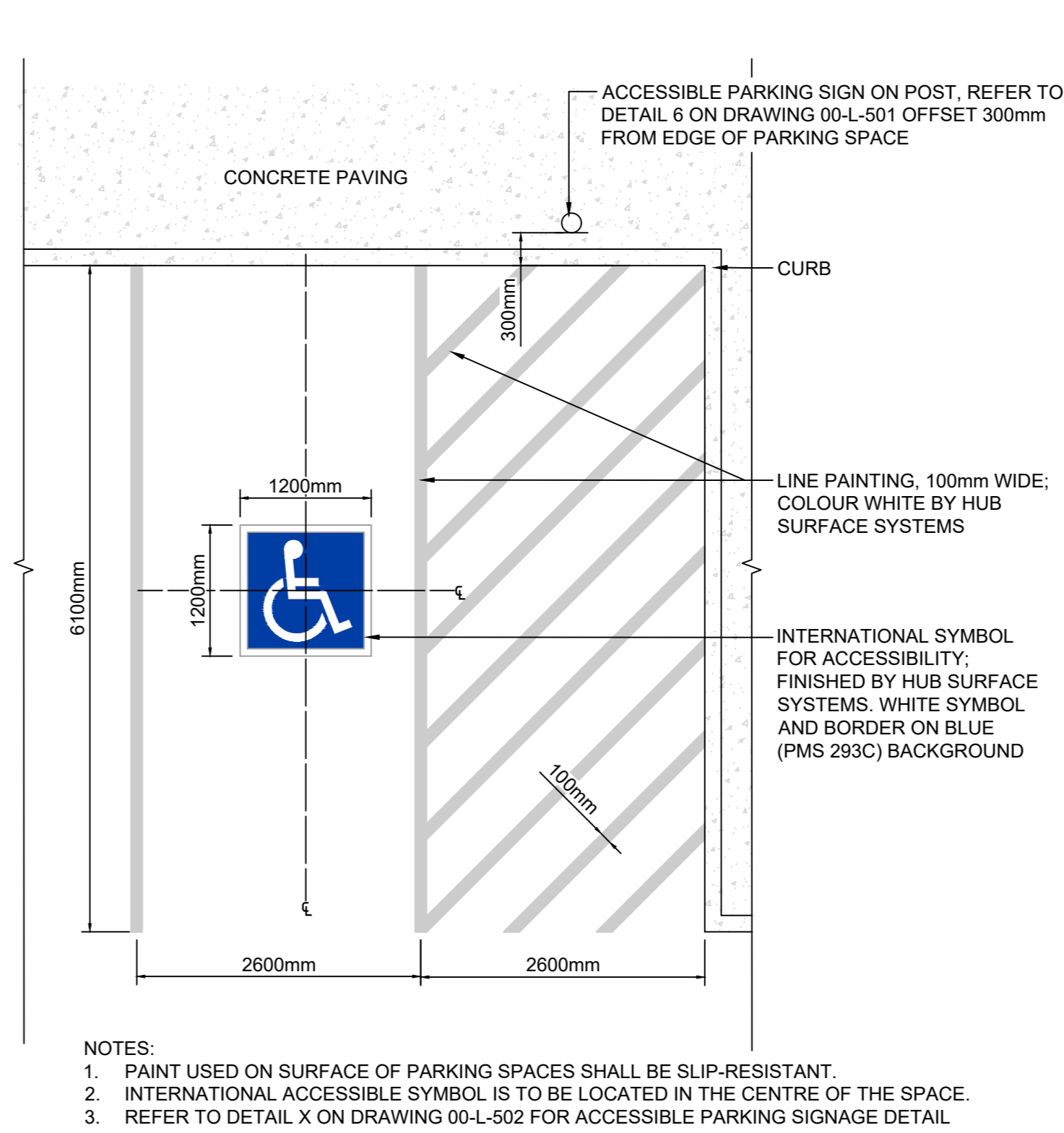
N.T.S.



## 4 ACCESSIBLE PARKING SPOT - EMPLOYEE PARKING

00-L-501

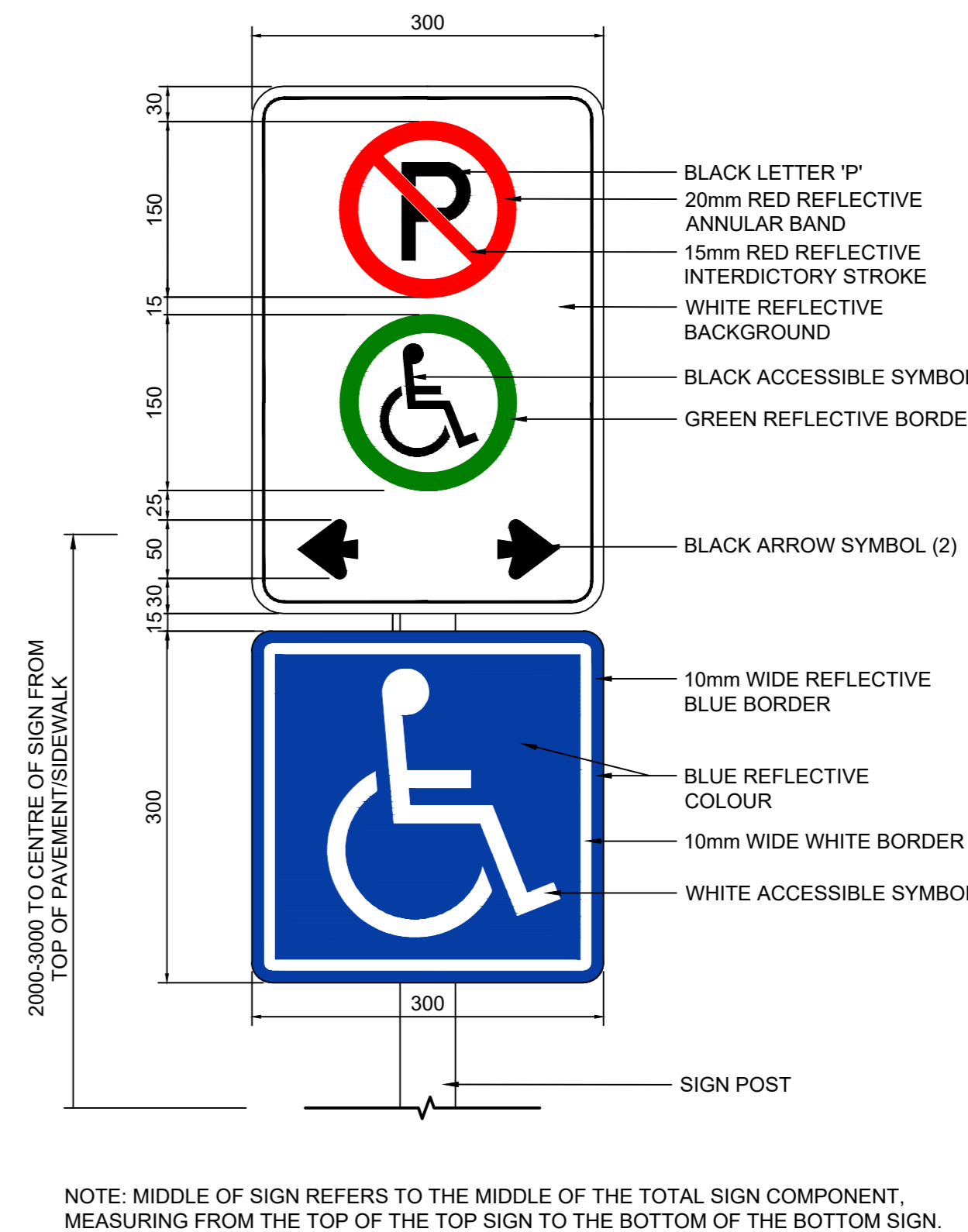
SCALE 1:50



## 5 ACCESSIBLE PARKING SPOT - VISITOR PARKING

00-L-501

SCALE 1:50



## 6 ACCESSIBLE PARKING SIGNAGE

00-L-501

SCALE 1:5

## PROJECT

WINNIPEG NORTH GARAGE REPLACEMENT  
100 Oak Point Hwy, Winnipeg, MB R2R 1V1

## CLIENT

City of Winnipeg  
510 Main St.  
Winnipeg, MB R3B 1B9  
TEL: 877-311-4974 FAX: 1.204.986.1311

## CONSULTANT

AECOM Canada ULC  
50 Sportsworld Crossing Rd.  
Suite 200, West Entrance, Kitchener, Ontario  
aecom.com

## REGISTRATION

THIS DRAWING IS ISSUED FOR TENDERING PURPOSES AND ARE NOT TO BE USED FOR CONSTRUCTION.

## ISSUE/REVISION

NO.	DATE	DESCRIPTION
0	02/16/2025	ISSUED FOR TENDER
C	02/14/2025	ISSUED FOR 90% DESIGN
B	12/06/2024	ISSUED FOR 60% DESIGN SUBMISSION
A	08/12/2024	ISSUED FOR 60% DESIGN
1/R		

## PROJECT NUMBER

60721079

## SHEET TITLE

LANDSCAPE NOTES, PLANT LIST AND DETAILS

## SHEET NUMBER

00-L-501

